



INDUSTRIAL AIR  
FILTRATION

## AFFINITY™

FILTER MEDIA

P84® POLYIMIDE  
BAGHOUSE FILTER BAGS

### EXCELLENT SURFACE FILTRATION EFFICIENCY

Excellent for demanding industrial applications involving **high temperatures up to 460°F (237°C)**, corrosion, and abrasion.

### KEY BENEFITS



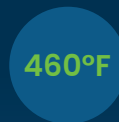
#### LOWER OPERATING COSTS

High surface filtration results in less blinding and energy consumption.



#### HIGHER FILTRATION EFFICIENCY

P84® fibers offer a larger surface area to achieve improved filtration.



#### HIGH- TEMPERATURE RESISTANCE

Supports applications with operating temperatures up to 460°F (237°C).



#### LONG SERVICE LIFE

High tensile strength withstands abrasion and other forces.

### FEATURES

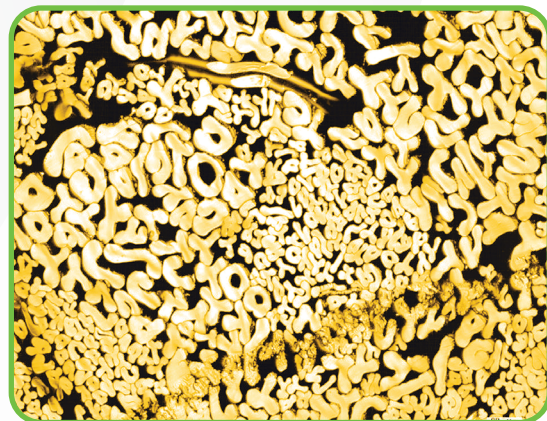
- Excellent in demanding industrial applications involving high temperatures, corrosion, and abrasion.
- Unique multilobular fiber offers a higher surface area for filtration.
- Layer with Acrylic, Polyester, PPS, or Meta-Aramid in
- Albarrie's **Tandem™** filter bag
- Layer with basalt in Albarrie's **Meteor™** filter bag.
- Non-flammable fibers
- 100% virgin premium fibers.
- Fits any baghouse to specification.
- Quality assurance under the strictest protocols to ASTM standards.

### OPTIONS

- Water-Repellent Treatment
- Oil Repellent Treatment
- PTFE Finish
- Release™ ePTFE membrane
- Scrim Supported
- Singed
- Wear Strips
- Woven Cuff
- Non-Woven Cuff
- NFPA Wire

### APPLICATIONS

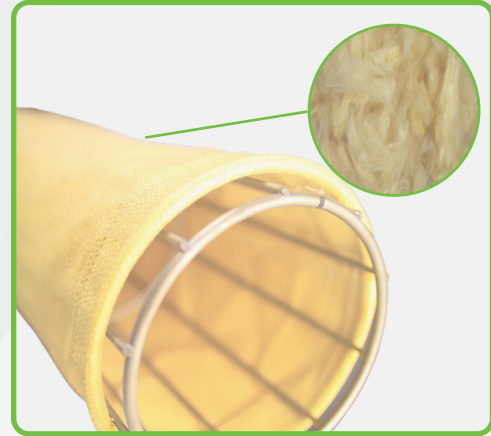
- Cement
- Chemicals
- Power Plants
- Foundry
- Plastics
- Metals/Steel
- Mining
- Waste to Energy
- Pharmaceuticals



## FABRIC PROPERTIES

### 100% P84®

<b>Abrasion Resistance</b>	Very Good
<b>Acid Resistance</b>	Good
<b>Alkali Resistance</b>	Moderate
<b>Oxidation Resistance</b>	Moderate
<b>Operating Temperature</b>	460°F (237°C)
<b>Short Surge Temperature</b>	500°F (260°C)
<b>Investment</b>	\$\$\$\$\$



**Contact Albarrie's Technical Sales Expert for all your options.**

## PRODUCT GALLERY



Disclaimer: Information provided by Albarrie on this sales sheet ("Sheet") is for general information purposes only. All information on the Sheet is provided in good faith, however Albarrie makes no representation or warranty of any kind, express or implied, regarding the accuracy, adequacy, validity, reliability, availability or completeness of any information on the Sheet. Products may not work as advertised or perform differently based on application, operating conditions, and depend on chemical, thermal, and humidity and other factors.

